

LGBTQ+ SERVICES

Results of ESCADV's needs assessment survey of June 2020

Summer 2020

Results



IN THE ARTICLE

Graphs and statements produced from the results of our survey

How we have interpreted the results

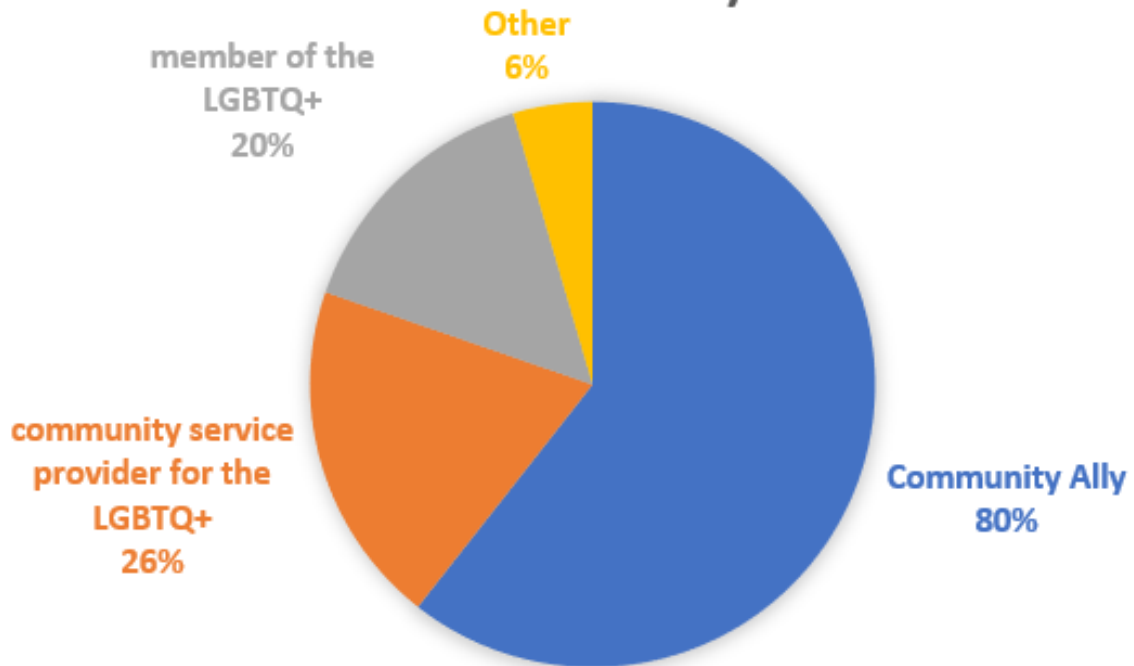
Ideas and plans for moving forward

"The secret of change is to focus all your energy, not fighting the old, but on building the new."

- Socrates

THE FIRST QUESTION, A DIFFICULT ONE?

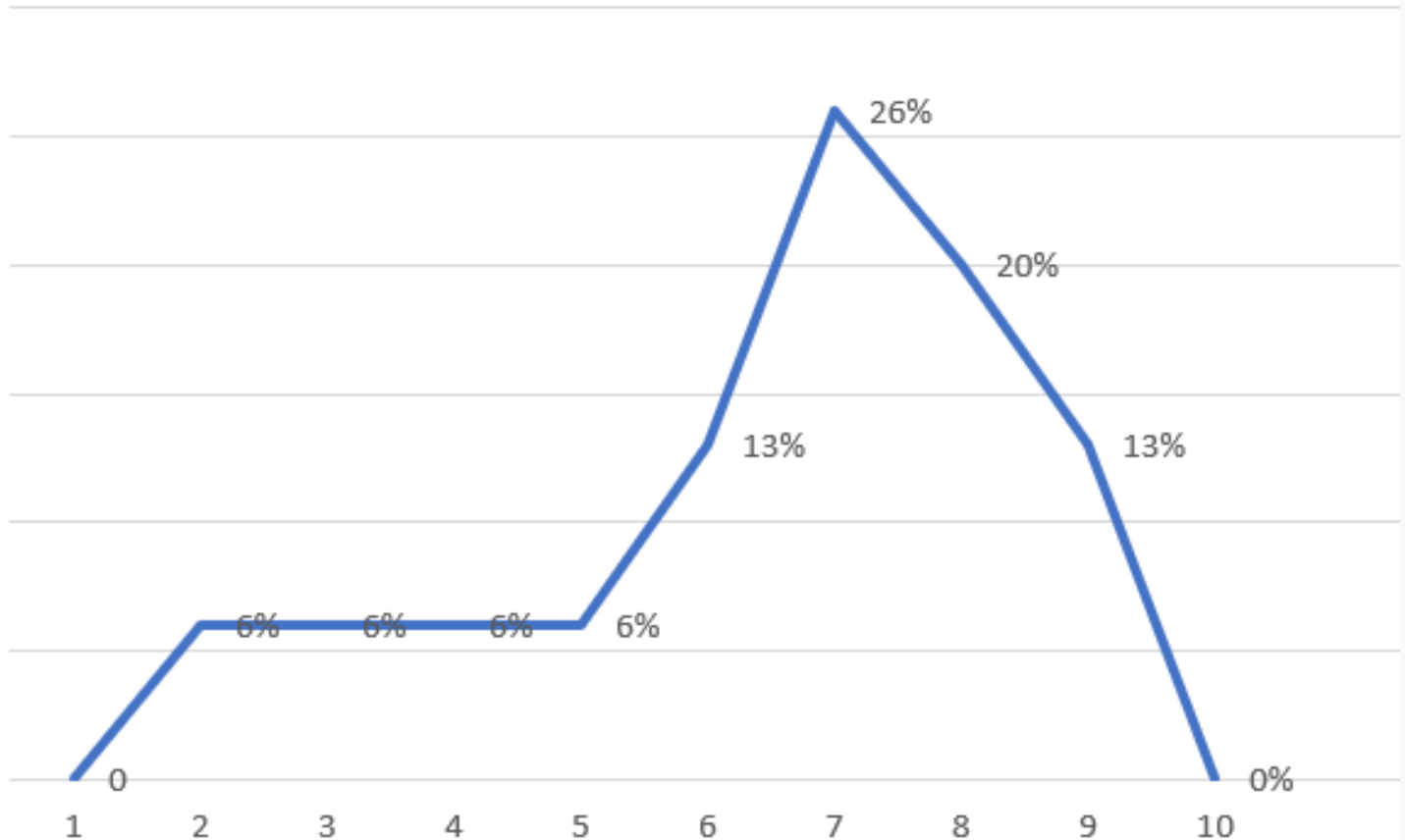
HOW DO YOU CATEGORIZE YOURSELF? (CHECK ALL THAT APPLY)



From the start we wanted to know who our participating audience was. Unfortunately a large percentage who started the survey, left at the first question; we ask ourselves if this was because many didn't mean to click the survey, or was it because this is an uncomfortable question. If this is and uncomfortable question, why is it?

QUESTION 2: DO YOU KNOW LGBTQ+?

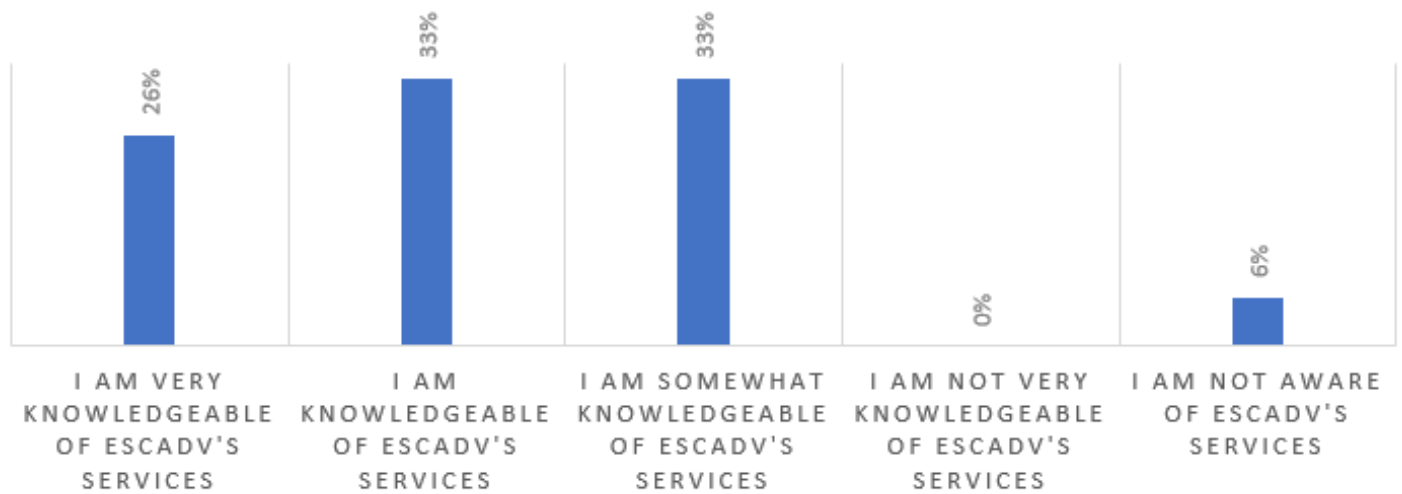
On a scale of 1-10 how would you rate your knowledge of the LGBTQ+ community? (1 being very little, 10 being very knowledgeable)



We see that knowledge of the LGBTQ+ community is on the rise, with the majority of participants believing themselves to be pretty knowledgeable. This means that we must keep pushing LGBTQ+ education, to improve the numbers even more.

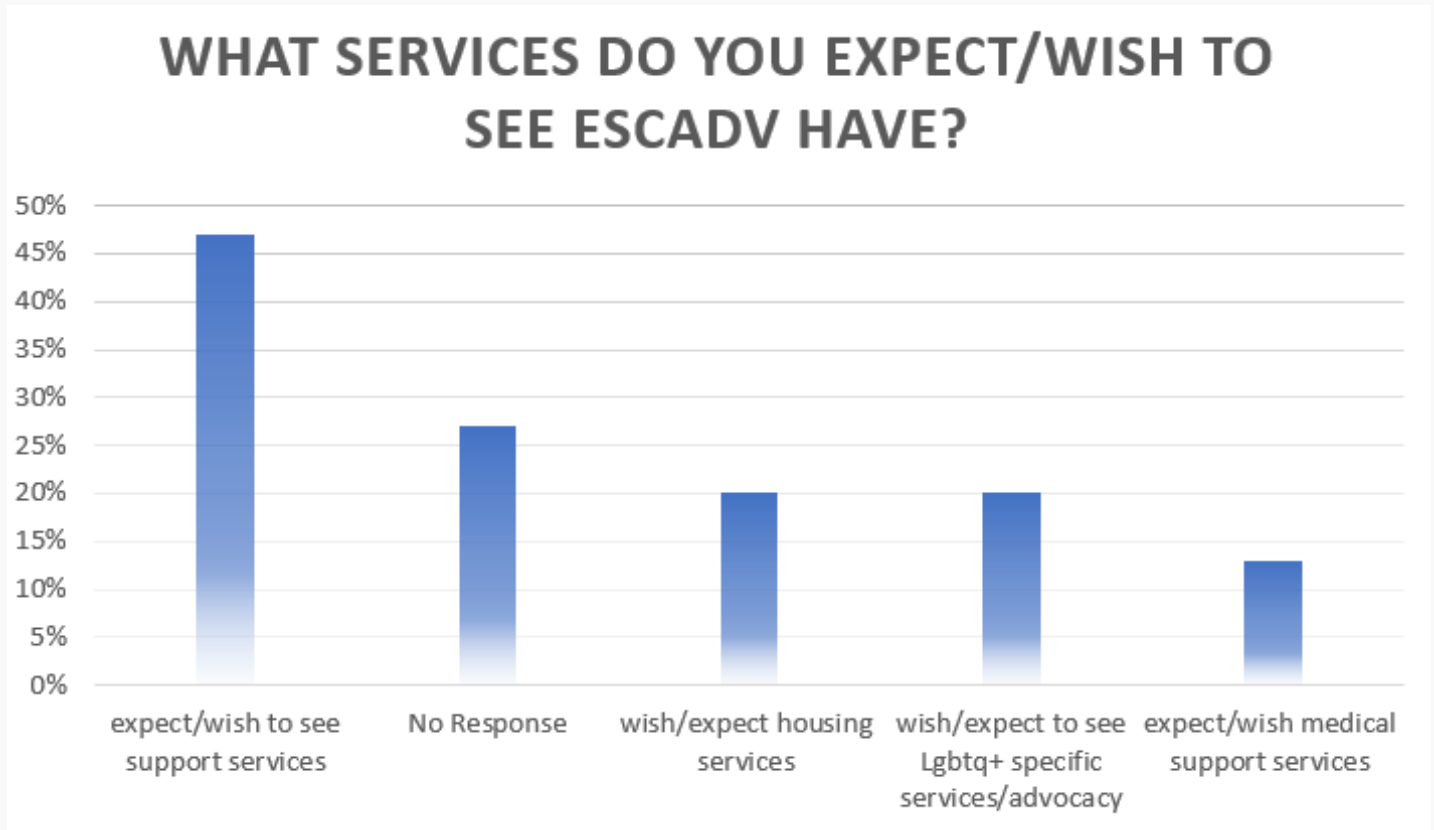
QUESTION 3: WHO ARE WE?

**HOW KNOWLEDGEABLE ARE YOU ABOUT
ESCADV'S SERVICES? (I.E. EMERGENCY
SHELTER, FINANCIAL ASSISTANCE, ACCESS
TO COUNSELING, VOLUNTEER
OPPORTUNITIES, ETC.)**



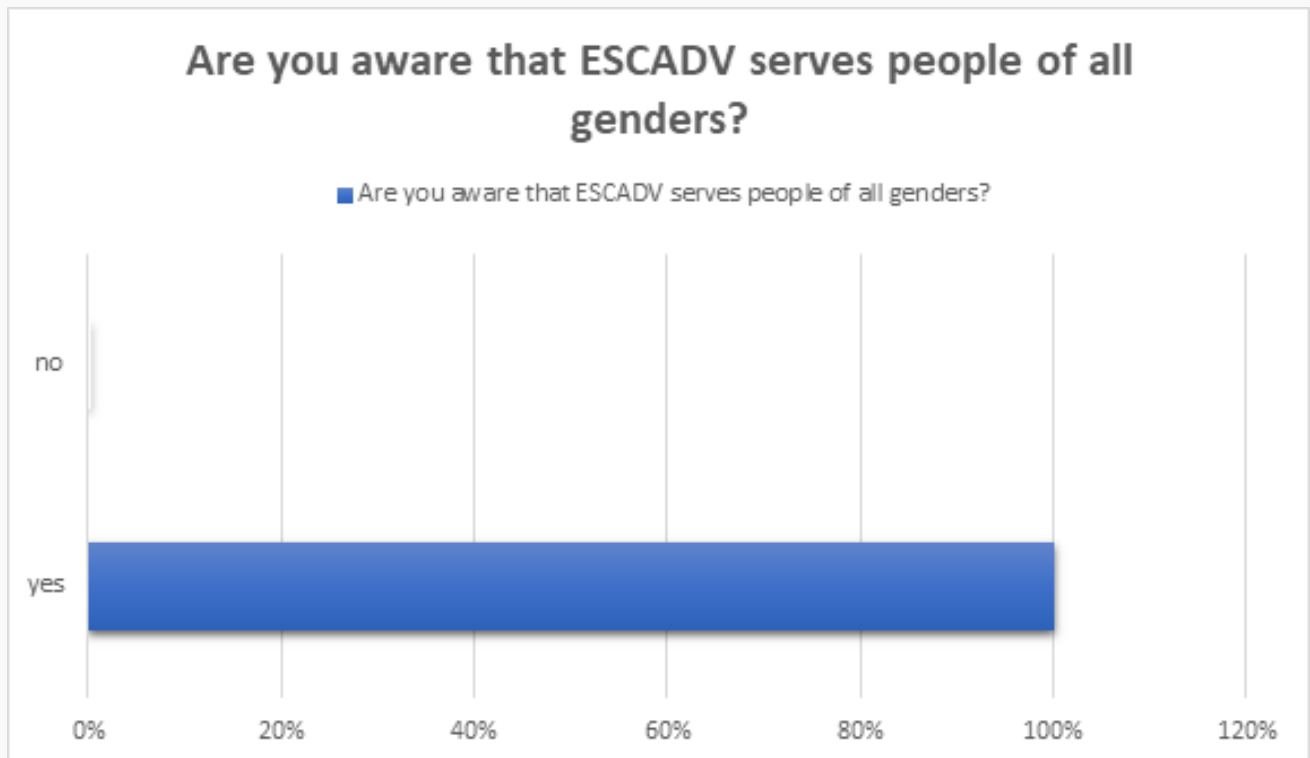
It is great to see people are aware of our existence, and some of our services, but we believe this must be improved. The community needs to know where to get help during a domestic violence and sexual assault emergency, and know there are more ways we can help apart from access to counseling or shelter.

QUESTION 4: WHAT WE DO.



It is great people know that we are a supportive organization, now we need to get out there and let people know how we support survivors of domestic violence and/or sexual assault.

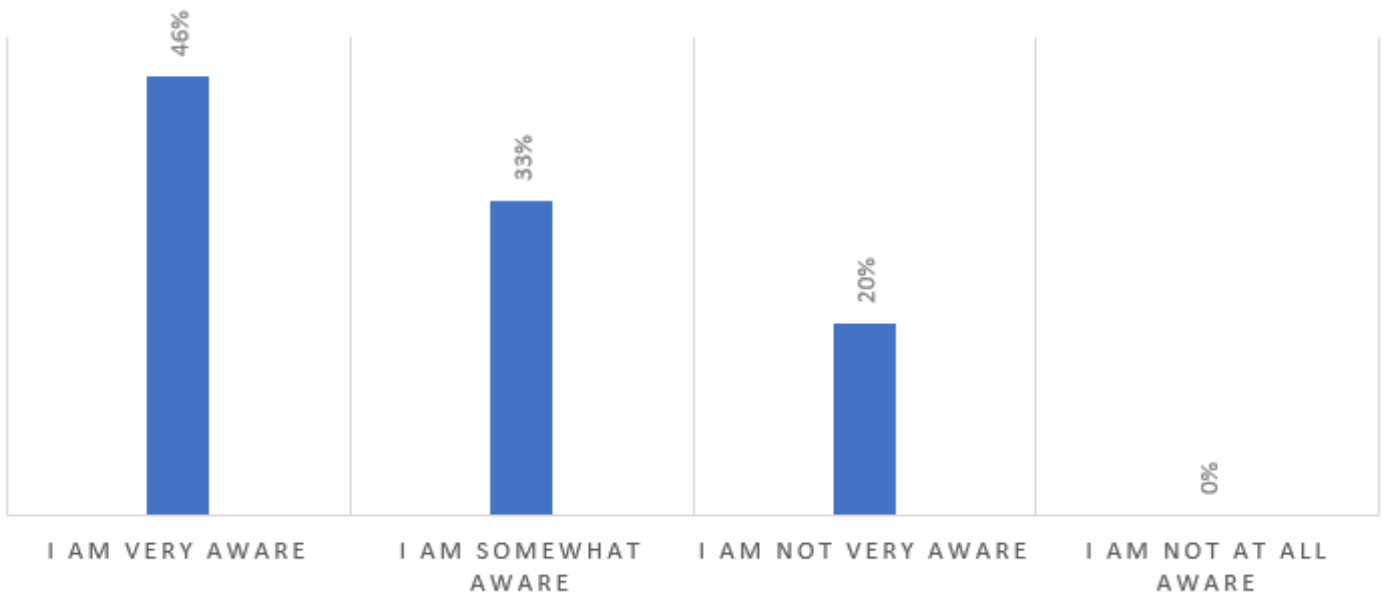
QUESTION 5: 20 TIMES 5



The best results so far! it is great to know that others know that ESCADV will serve ANY survivor of domestic violence and/or sexual assault, regardless of gender. We also serve any person regardless of race, ethnicity, nationality, creed, sexual orientation, etc.

QUESTION 6: GOOD BUT NOT BEST

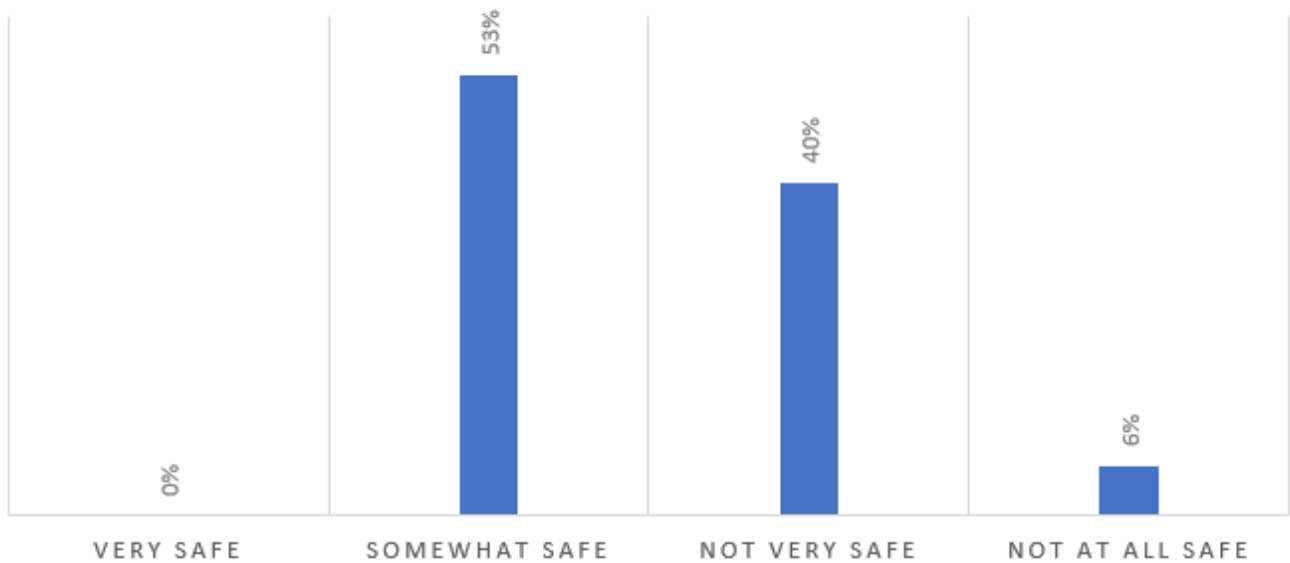
HOW AWARE ARE YOU OF THE PREVALENCE OF LGBTQ+ SPECIFIC DOMESTIC VIOLENCE AND SEXUAL ASSAULT?



It is amazing that so many are very aware of LGBTQ+ specific domestic violence and sexual assault, but we believe we could do better about educating the community. With over 50% of some Lgbtq+ identities experiencing sexual assault, it is part of our mission to help stop it from happening and one way to do that is education.

QUESTION 7: SAFE OR NOT SAFE

HOW SAFE DO YOU FEEL THE LGBTQ+ COMMUNITY MAY BE CURRENTLY ON THE EASTERN SHORE OF VIRGINIA?

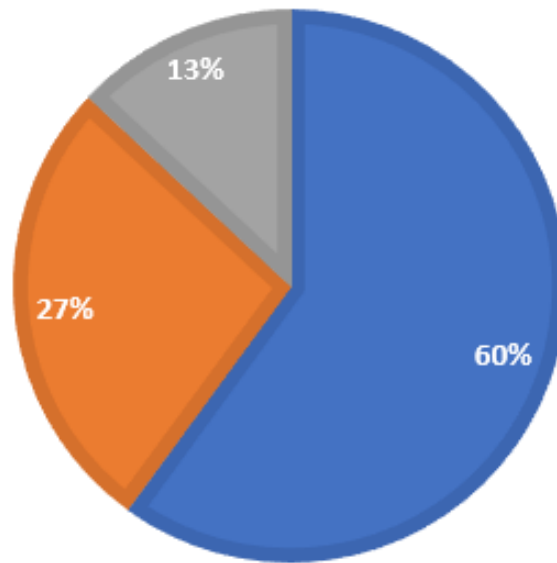


Interesting data to receive, made more interesting when you look at the individual results. Despite the results up above, over 54% of those who identified as LGBTQ+ felt that our community is not safe, which is something ESCADV strives to change.

QUESTION 8: WHAT WE NEED

WHAT DO YOU FEEL THE LGBTQ+ COMMUNITY NEEDS TO FEEL SAFE ON THE EASTERN SHORE OF VIRGINIA?

■ Advocacy ■ Education ■ Safespaces



Another open ended question, yet almost all of the results mentioned advocacy, education, and/or safe spaces; all of which we can provide. Now we need to make it happen.

QUESTION 9: WHAT WE NEED CONT.

As ESCADV continues to grow, what are some services we may be able to provide for the LGBTQ+ community especially for people who are transgender?

■ Lgbtq specific Support Groups ■ Lgbtq specific advocacy
■ Inclusive Housing ■ safe space events

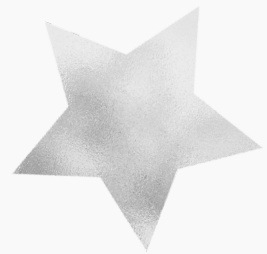


the last open ended question, similar to the previous one yet adding a key component: gender inclusive housing. Research has already been in progress by the ESCADV team to learn how to achieve this safely and without bias.

QUESTION 10: SILVER STAR

OVERALL ON A SCALE FROM 1-10, HOW EFFECTIVE IS ESCADV AT OUR MISSION TO BRING EMPOWERMENT TO THOSE SURVIVORS OF DOMESTIC VIOLENCE AND SEXUAL ASSAULT?(1 BEING NOT AT ALL EFFECT, 10 BEING EXTREMELY EFFECTIVE)

Average score: 8.3



It is inspiring to find that the community believes that we are successful on our mission of bringing empowerment to survivors, and we do notice there is still room to grow and evolve!

WHAT CAN YOU DO TO HELP US ON OUR MISSION?

SPREAD THE WORD

Ask us about our Bracelets, pens, flyers, and brochures to help us spread the word to reach those who may need our assistance, and know that our 24-hour hotline number: (757)-787-1329

ATTEND OUR EVENTS

Support our events such as *LGBTQ+ 101*, our *Love Should Not Hurt Gala*, and our *Mathew May Memorial Oyster Roast* to name a few!

VOLUNTEER

Volunteers make the world go round! we have several levels of volunteership, from small jobs to more intense and hands-on. We may even have spots free to join our volunteer based board!

DONATE

And of course, we accept all forms of donations: clothing, household items, food, hygiene products, and financial donations are always welcome. We also have opportunities to sponsor certain events: LGA Golf tournament, Galas, LGBTQ+ mix & mingle, and our Oyster roast are just a few.
